

"Introduction of the Sustainable Campus Working Group within the ECIU-Network"

I. Intro to ECIU

II. Intro to SCWG

III. Focus & projects

IV. Success Factors / Challenges

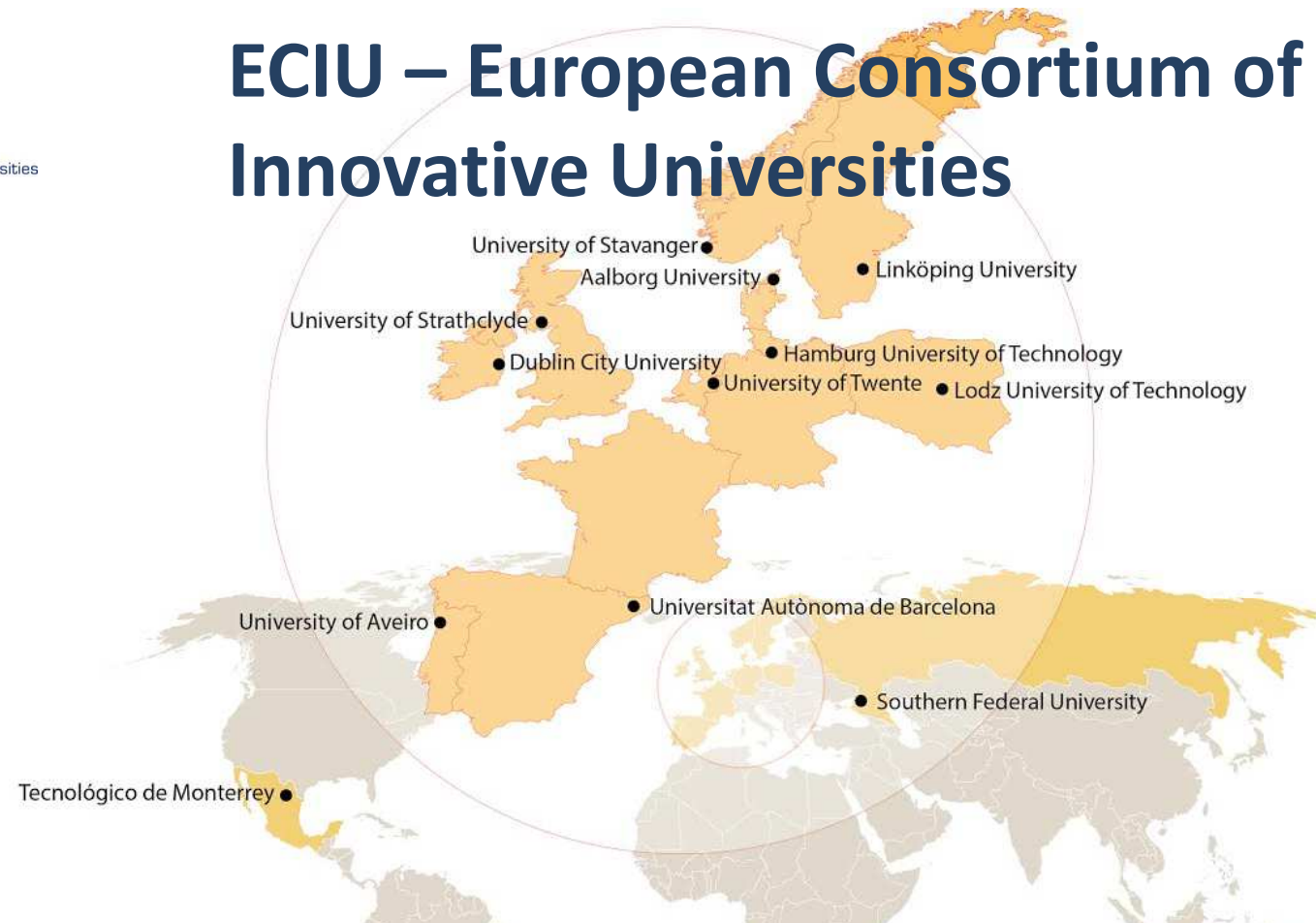


ECIU

European Consortium of Innovative Universities

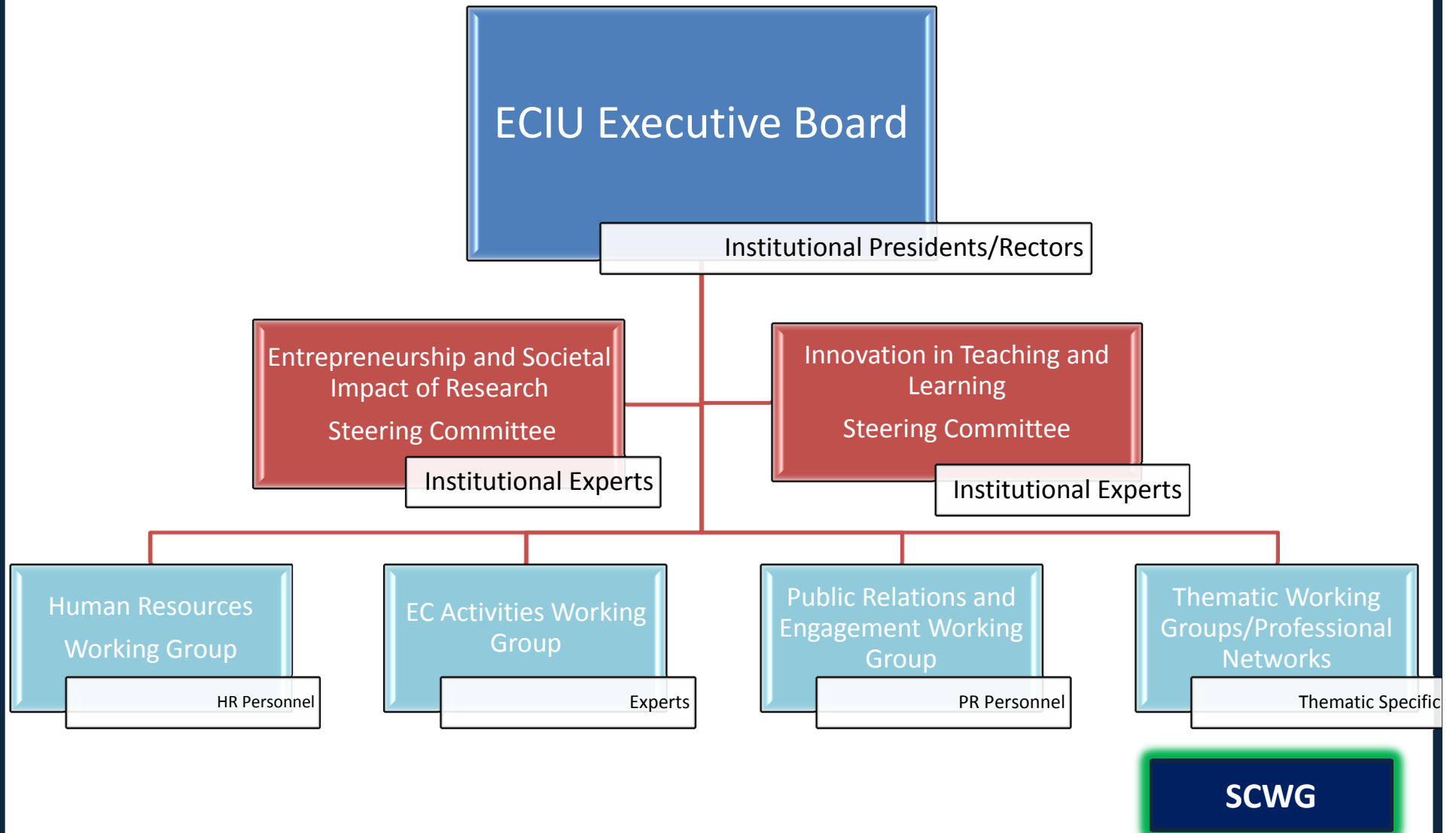
I. Intro to ECIU

ECIU – European Consortium of Innovative Universities



- research intensive young universities with strengths in engineering & social sciences
- emphasis on innovation, creativity, societal impact, entrepreneurship, innovative teaching & learning practices

Organisational Structure





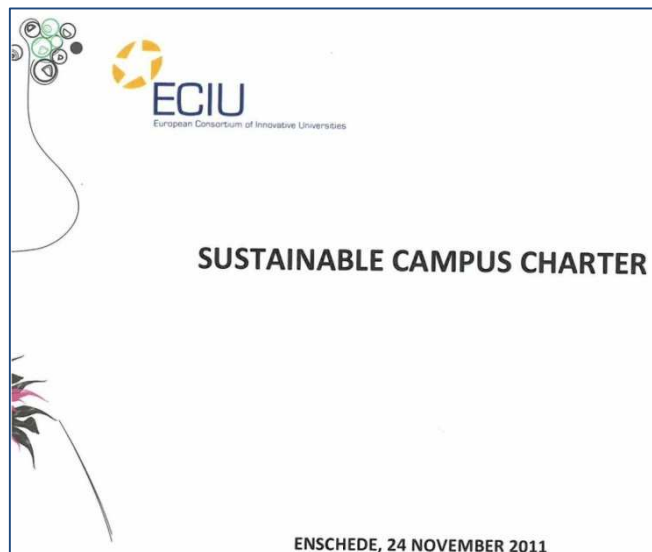
ECIU

European Consortium of Innovative Universities

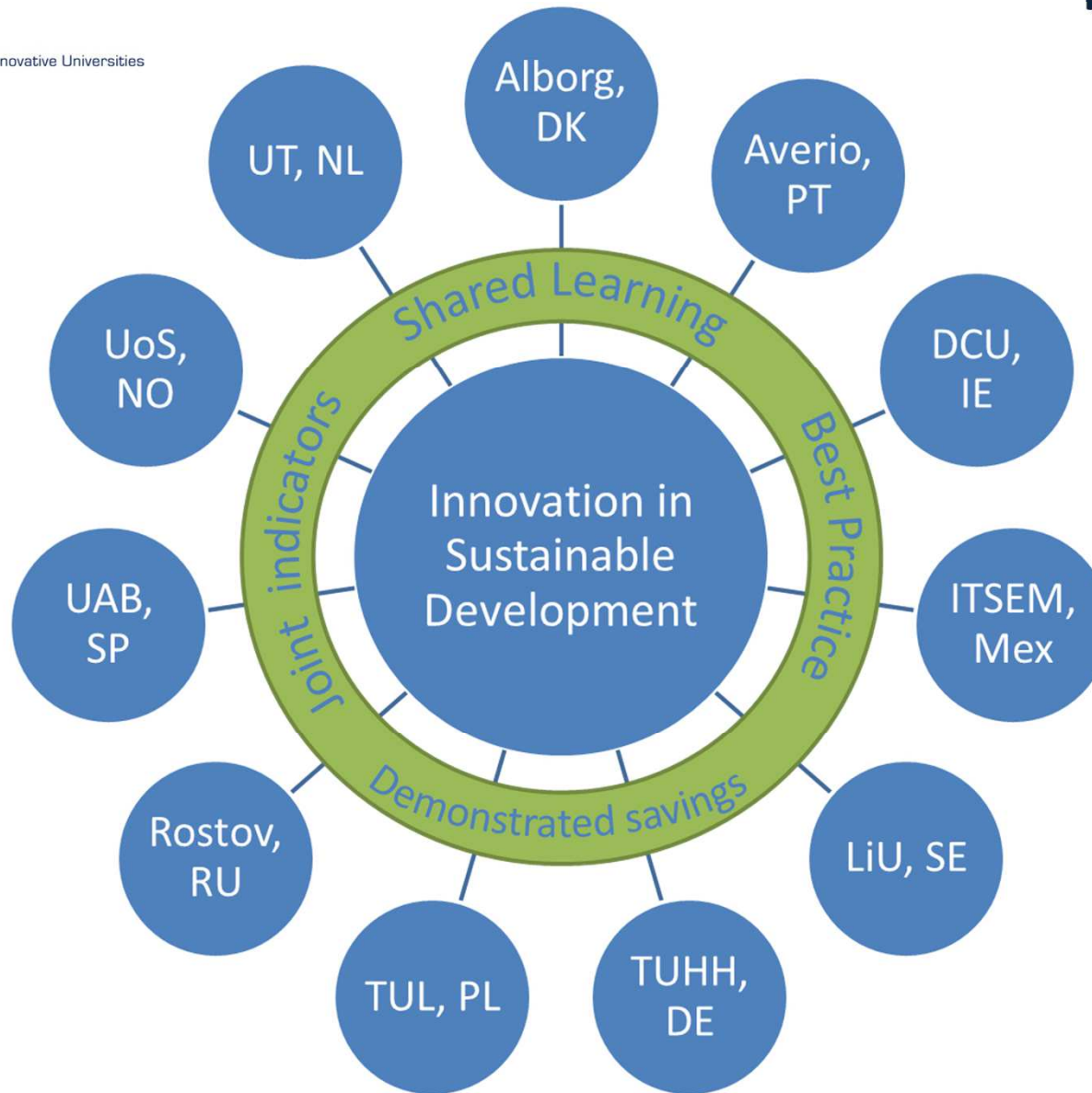
II. Intro to SCWG

Introduction SCWG – Sustainable Campus Working Group

- Established : 2012
- Objective : to promote sustainable campuses within ECIU
- Sustainable Campus Charter signed
- Knowledge transfer of best practice
- Indicator matrix
- Broad membership – Operations/HR/Research/Management



Our Approach





ECIU

European Consortium of Innovative Universities

III. Focus & projects

Focus topics within SCWG

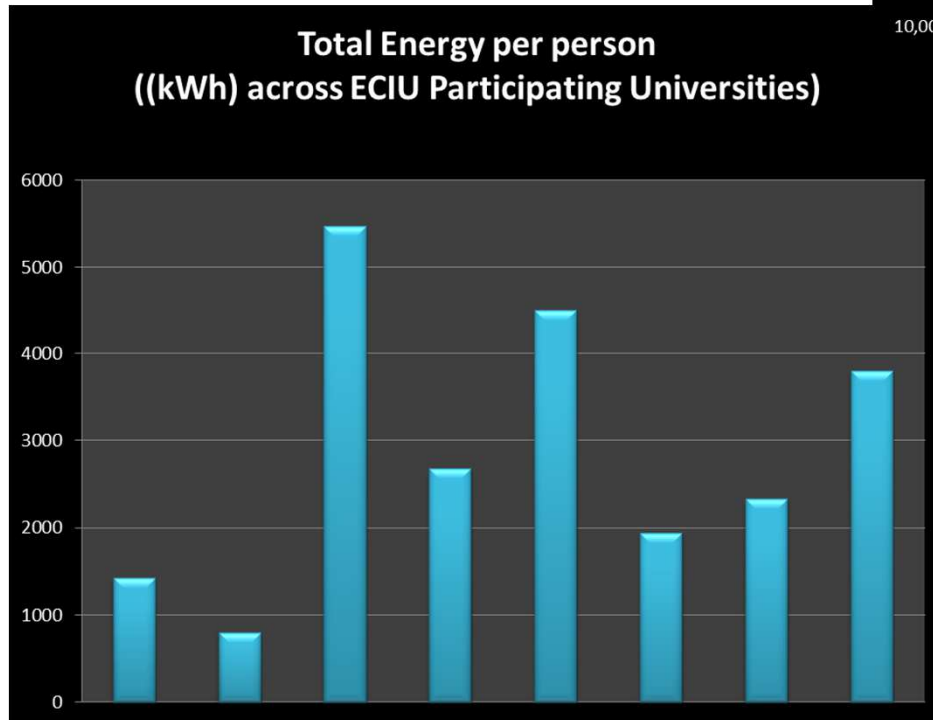
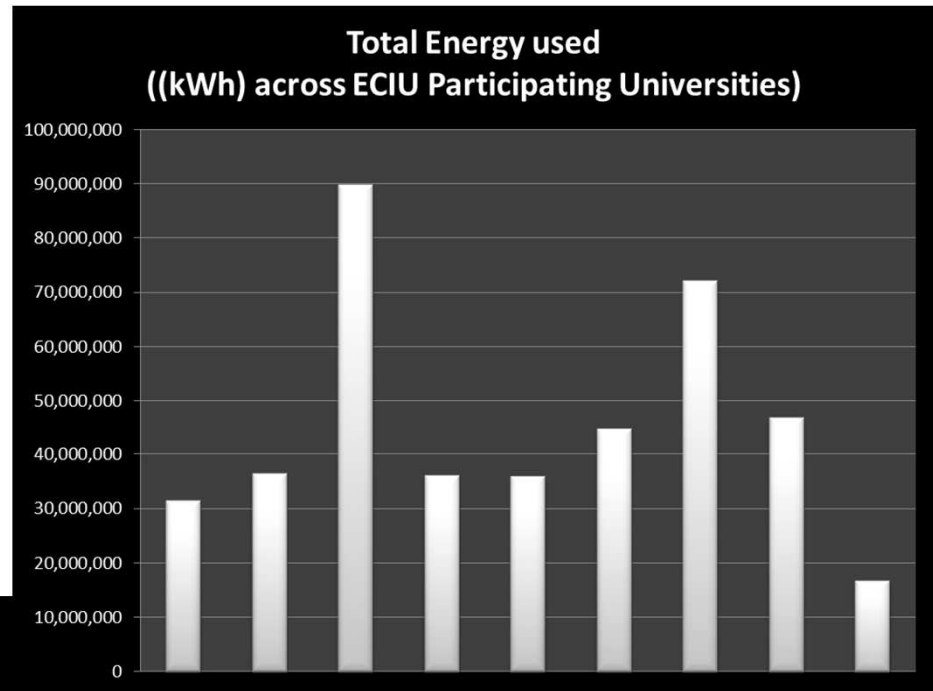
- sustainability indicator matrix
- support societal adoption of sustainable best practices and innovations
- potential for several inter-institutional/interdisciplinary H2020 proposals
- living lab model for sustainable campus
- certified energy management systems

Project ideas “Teaching & Learning”

The 2030 University

- Carbon neutral student lecture series
- Short-term student exchange on sustainability projects

Indicator Matrix



Initial

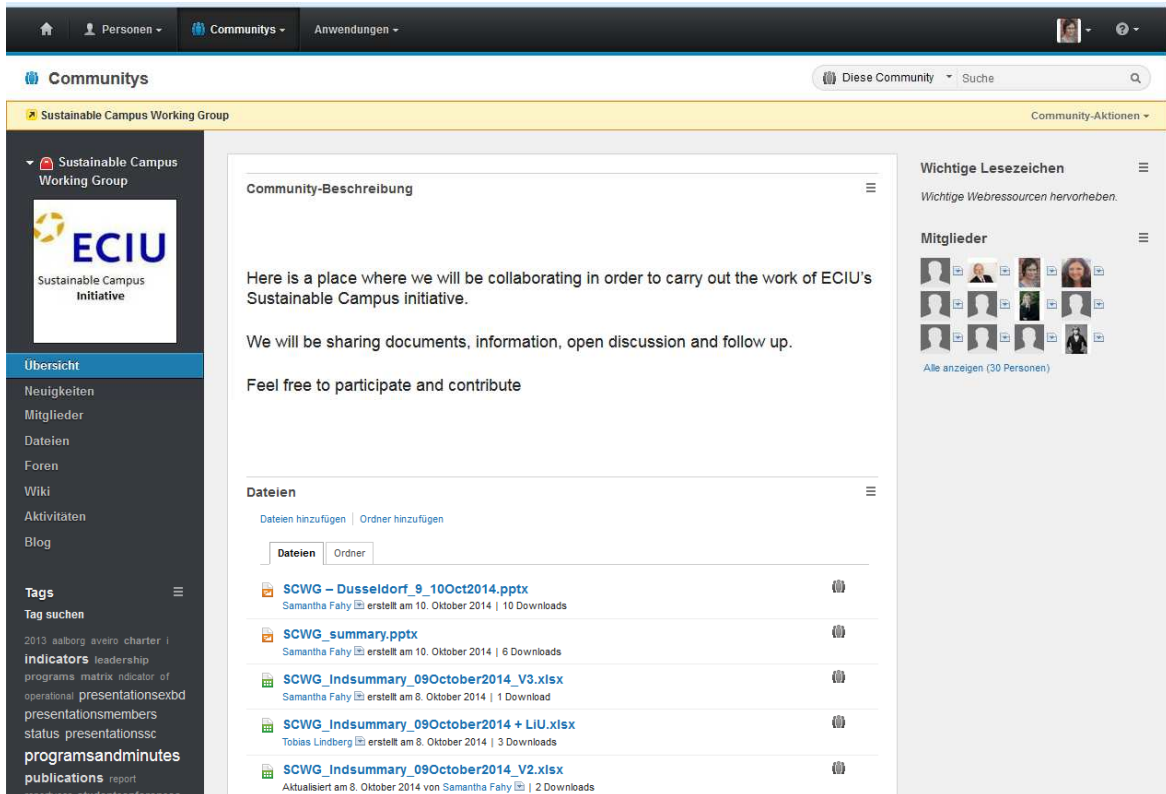
Operational Indicators : (e.g. Energy, Water, Waste, Biodiversity, Transport)

Future

Teaching & Learning

Research Development & Innovation

Shared communication platform



The screenshot shows a web interface for a community platform. At the top, there is a navigation bar with 'Personen', 'Communities', and 'Anwendungen'. Below this, the main content area is titled 'Sustainable Campus Working Group'. On the left, there is a sidebar with a navigation menu including 'Übersicht', 'Neuigkeiten', 'Mitglieder', 'Dateien', 'Foren', 'Wiki', 'Aktivitäten', and 'Blog'. The main content area contains a 'Community-Beschreibung' section with the text: 'Here is a place where we will be collaborating in order to carry out the work of ECIU's Sustainable Campus initiative. We will be sharing documents, information, open discussion and follow up. Feel free to participate and contribute'. Below this is a 'Dateien' section with a list of files: 'SCWG - Dusseldorf_9_10Oct2014.pptx', 'SCWG_summary.pptx', 'SCWG_Indsummary_09October2014_V3.xlsx', 'SCWG_Indsummary_09October2014 + LIU.xlsx', and 'SCWG_Indsummary_09October2014_V2.xlsx'. On the right side, there is a 'Wichtige Lesezeichen' section and a 'Mitglieder' section showing a grid of member avatars.





ECIU

European Consortium of Innovative Universities

IV. Success Factors / Challenges

Success Factors/Challenges

- sustainability – grand challenge/ existential issue facing us all
- implementing best practice across ECIU
- embedding graduate competencies
- resources for management and coordination of SCWG
- We are all unique but must work together!

Thank you.



<http://eciu.web.ua.pt/>

Contacts:

Hamburg University of Technology

Christine Stecker

sustainability@tuhh.de

Dublin City University

Samantha Fahy

samantha.fahy@dcu.ie