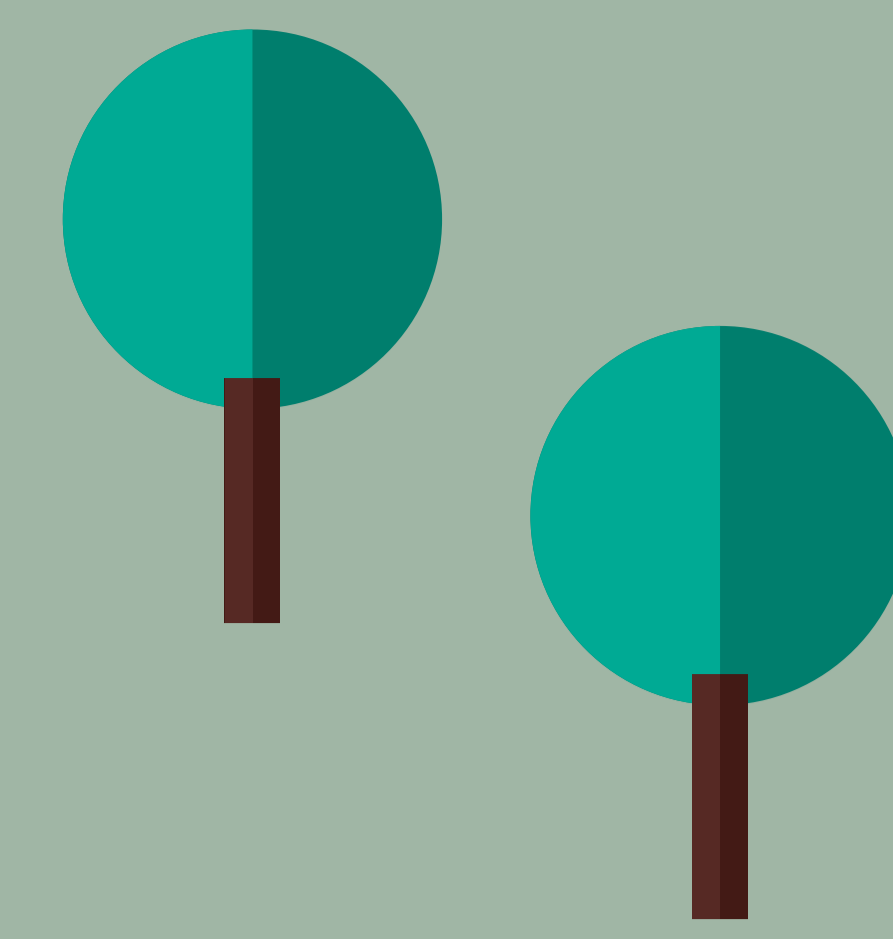


NIEMI GREEN CAMPUS 2018



KEY CHALLENGES

Environment is a strategic focus area of Lahti University of Applied Sciences (Lahti UAS), while the goal of Lahti region is to be internationally recognized hub of environmental expertise. Environment should be embedded and promoted in all the operations of Lahti UAS with involvement of stakeholders at all levels.

Lahti UAS is actively developing a new green, multi-stakeholder campus at Niemi area in Lahti. For Lahti UAS Niemi campus development means both spatial and functional transformation from single faculty campuses to multiactor community.



OBJECTIVES

Lahti UAS aims at being an important actor in need-based cleantech RDI. This calls for active co-operation and involvement of own experts, students, companies, national and international partner universities and other stakeholders. Material efficiency, energy efficiency and sustainable urban environment are the main cleantech themes in Lahti UAS RDI.

One of RDI projects, *Future Campus Demonstrator*, supports the development of innovative multiactor campus. Energy and resource efficient campus solutions are a part of work. An aim is to create demonstration platforms for clean energy and material efficiency pilots. The demonstrations promote cooperation between cleantech stakeholders in the campus and are integrated into studies.

Other important aspects of green campus development include sustainable transportation and the development of environmental communication. An essential aspect is to integrate environmental issues into teaching at all faculties.

Niemi campus development is based on user-centric approach. Future learning environment is developed through identifying the key-user groups, conducting user research and involving the users heavily to the conceptualization of future campus.

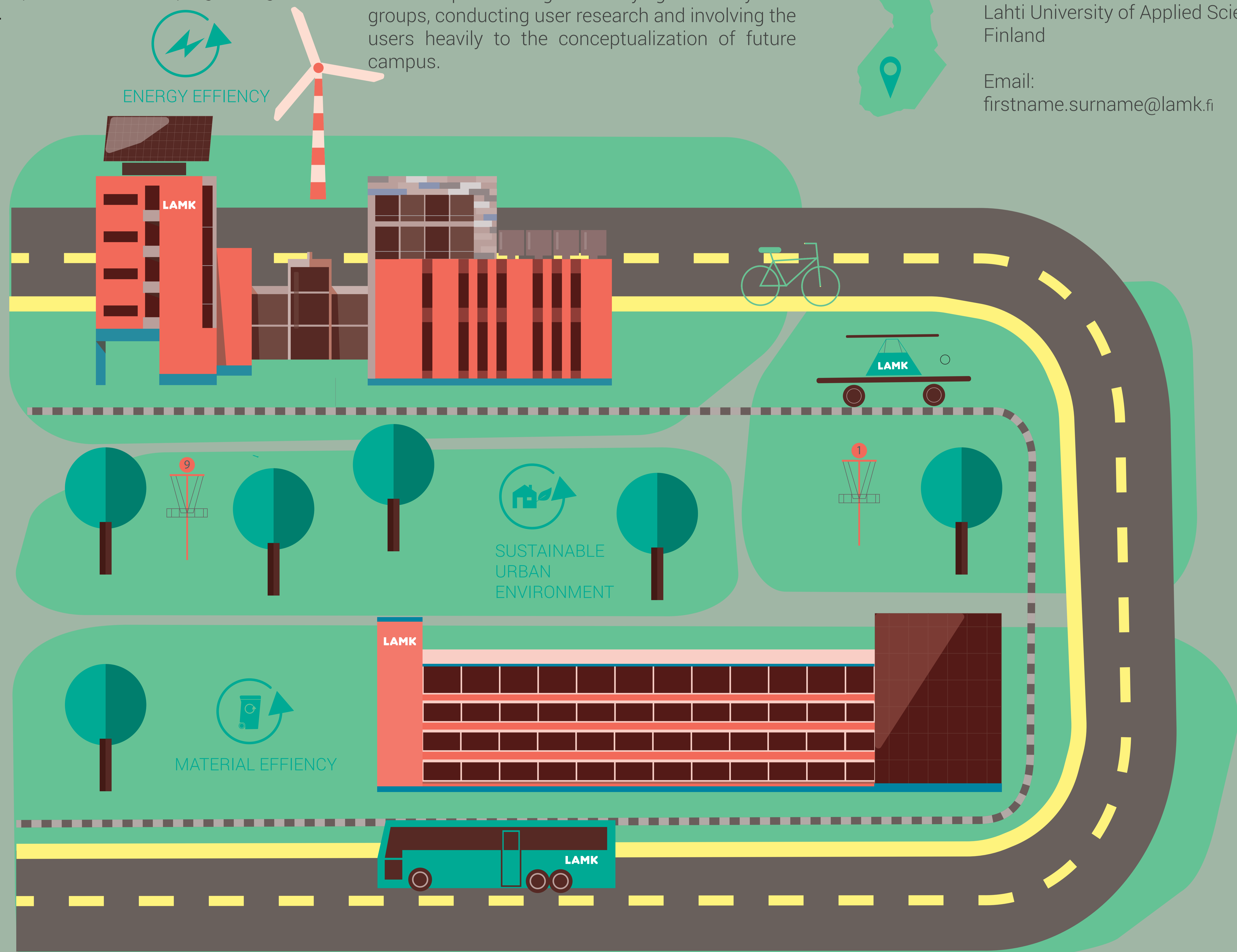
SUCCESS FACTORS

The key issue to building a green multiactor campus and implementing environment as a strategic focus area is the involvement of all stakeholders. This calls for active communication both within the university and with other stakeholders. Student involvement is organised through different project works, trainings and thesis works, for which the students get study points. Student and personnel opinions are also sought at different events and surveys.

An essential part of green campus development is also to make things visible. This can be done through different pilots, demonstrations and quick experimentations. The idea is to learn from experiments, both from the good and failed ones. Through visible demos it is easier to involve new stakeholders both within the personnel and wider.

REALIZATION

The realization of Green Campus is under way with installation of solar panels at Niemi. Demos on energy efficiency, material efficiency and sustainable transportation are also progressing as pictured below.



CONTACT



Maarit Virtanen
Jussi Kuusela
Silja Kostia

Lahti University of Applied Sciences
Finland

Email:
firstname.surname@lamk.fi