

**From Innovation to Acceptance:
Challenges and Potentials of a Sustainable Energy Transition**

The University Alliance for Sustainability

October 21, 2020

**Challenges and opportunities of raising
social acceptance to accelerate the
energy transition process**

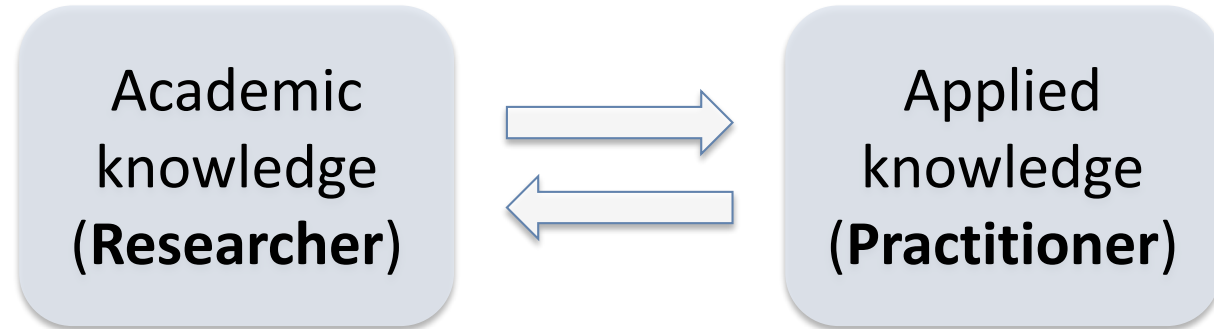


Alessandro Luè
Poliedra – Politecnico di Milano
alessandro.lue@polimi.it

Bio



- *Research and consultancy for public administration*
- *EU funded projects*



The research knowledge gap

Bio



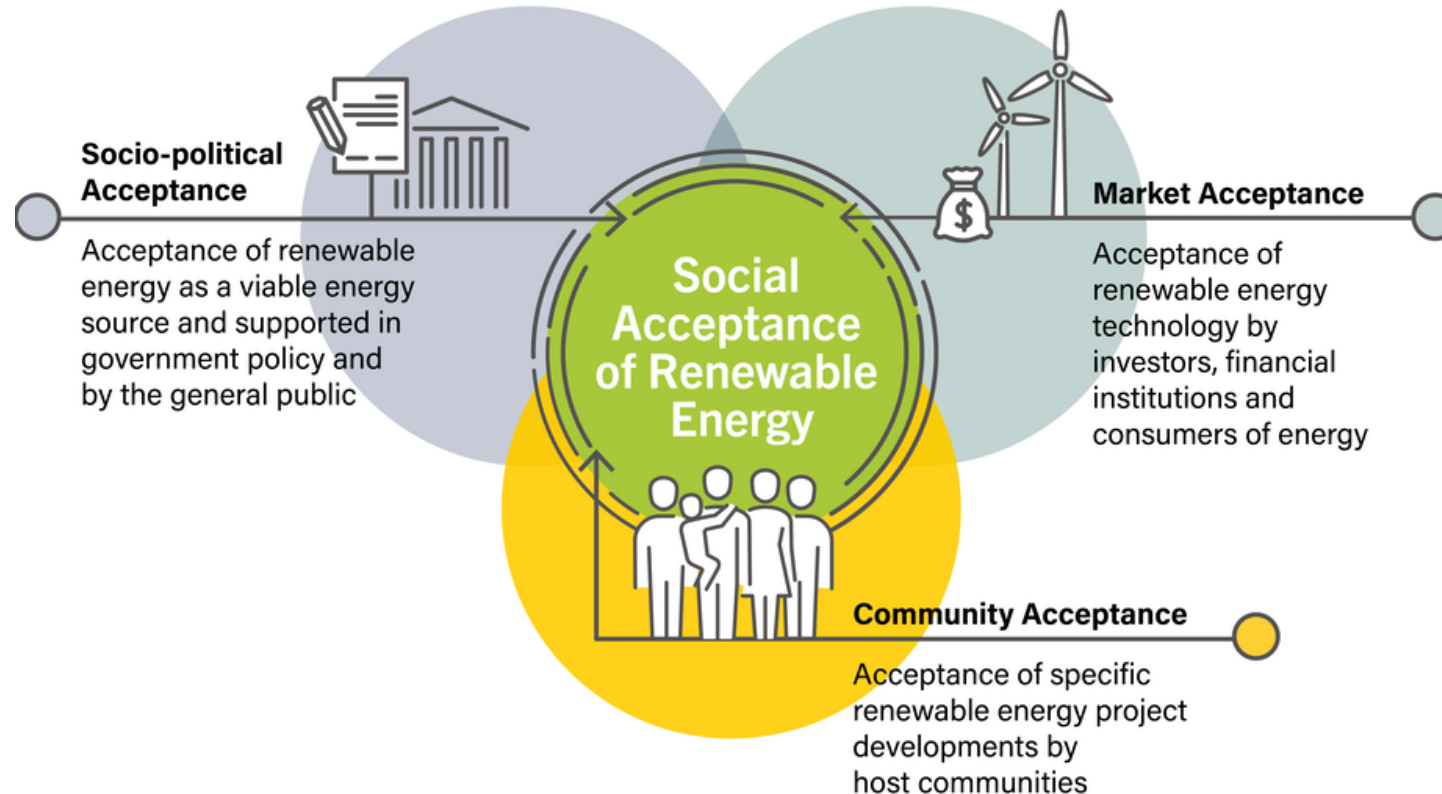
Decision aiding | energy
| environment
| mobility

Decision aiding

- Participatory and co-design processes
- Tools for active-collaborative citizenship and behavioral change
- Human centred design
- Multi-criteria analysis
- Quantitative and qualitative analysis
- Optimisation algorithms and simulation models

Social acceptance of RES: a possible framework

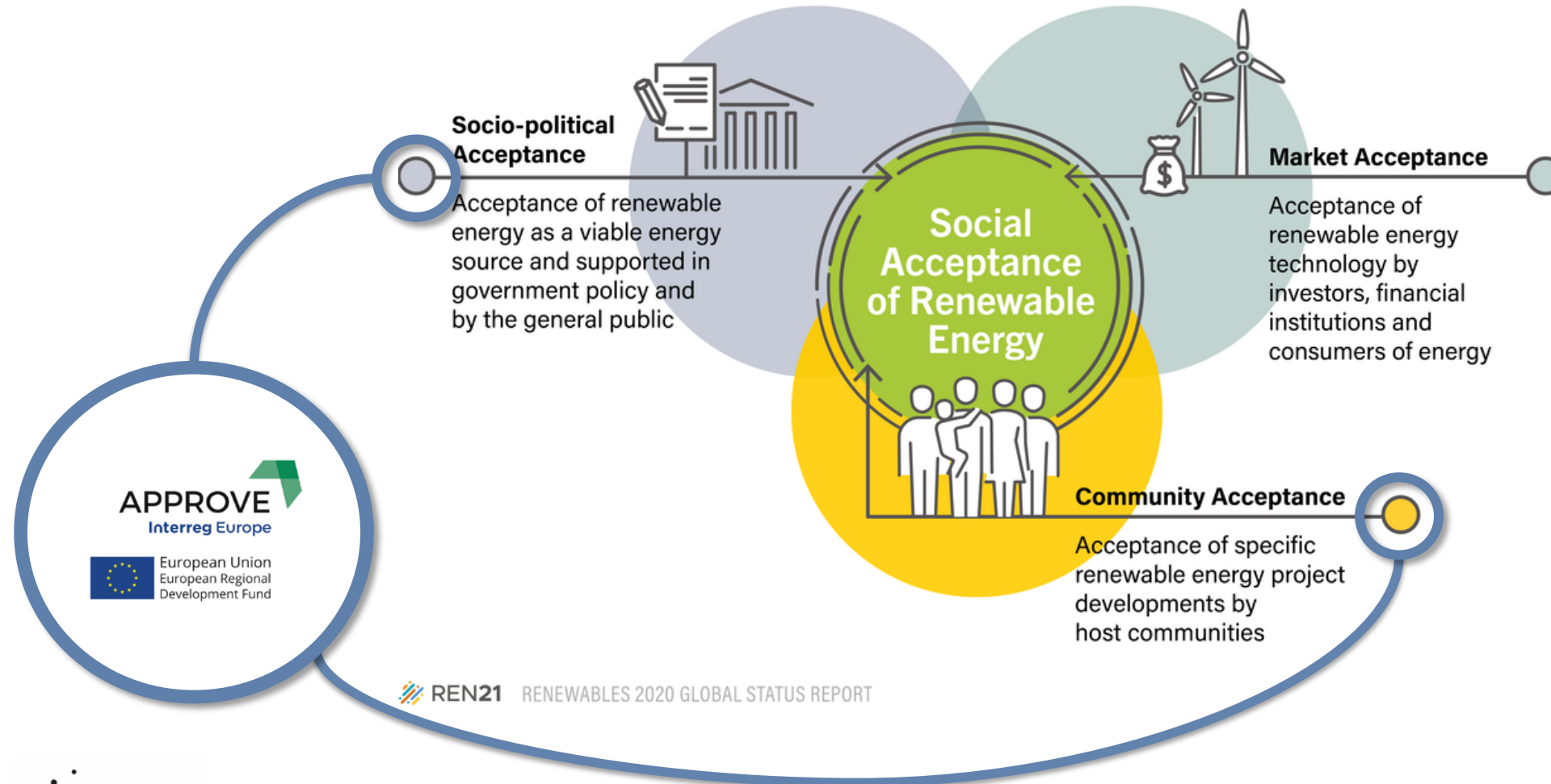
Dimensions of Social Acceptance of Renewable Energy



REN21 RENEWABLES 2020 GLOBAL STATUS REPORT

Social acceptance of RES: a possible framework

Dimensions of Social Acceptance of Renewable Energy



Wüstenhagen, R., Wolsink, M., & Bürer, M. J. (2007). Social acceptance of renewable energy innovation: An introduction to the concept. *Energy policy*, 35(5), 2683-2691.

https://www.ren21.net/gsr-2020/chapters/chapter_08/chapter_08/

Advancing Public Participation and stakeholder engagement for the improvement of renewable Energy policies



Influencing EU Structural Funds (ERDF) programmes of four regions to promote RES

- effective public participation and stakeholder engagement
- awareness raising
- capacity building



Regional Council of Lapland (FI) - Lead Partner

Lapland is an arctic sparsely-populated region with high technical potential in the bioenergy, wind and hydro sectors



Poliedra (IT) - Advisory Partner

develops and applies innovative methodologies and tools in mobility, environment, decision aiding and participation



Regional Council of Normandy (FR)

Normandy has a heterogeneous territory with a potential in the wind and biogas sectors and is the first French region in the wood energy sector



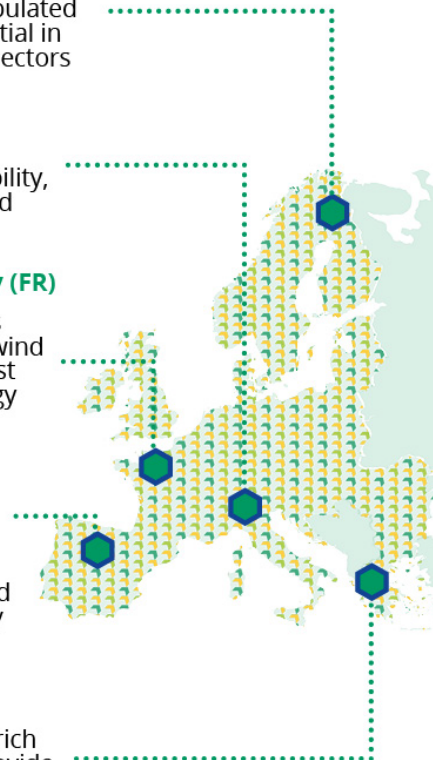
Regional public energy entity of Castilla y León (ES)

Castilla y León is the Spanish region with the most wind and hydro power installed, interested in developing also the bioenergy and geothermal sectors



Region of Epirus (GR)

Epirus is a mountainous region rich in natural resources that can provide innovative and sustainable energy solutions through research and innovation strategies



The project

1st phase 2,5 years

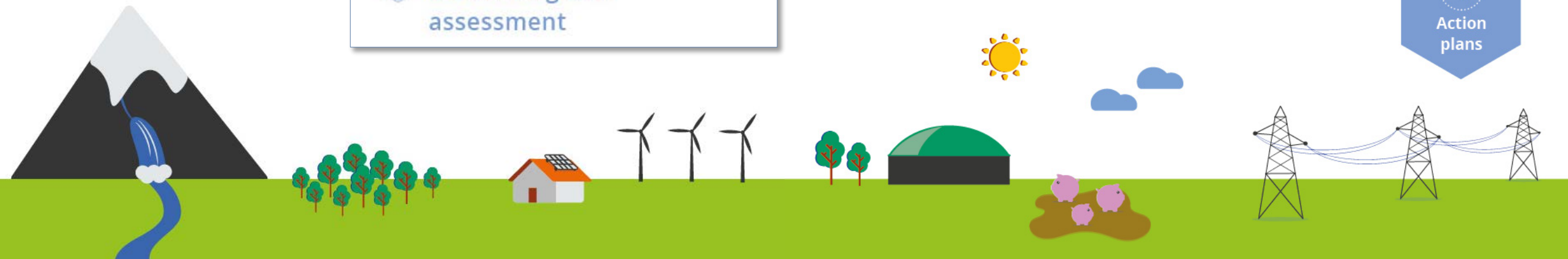
- Analysis of regional gaps, needs and opportunities
- Identification of good practices
- Development of regional action plans

2nd phase 2 years

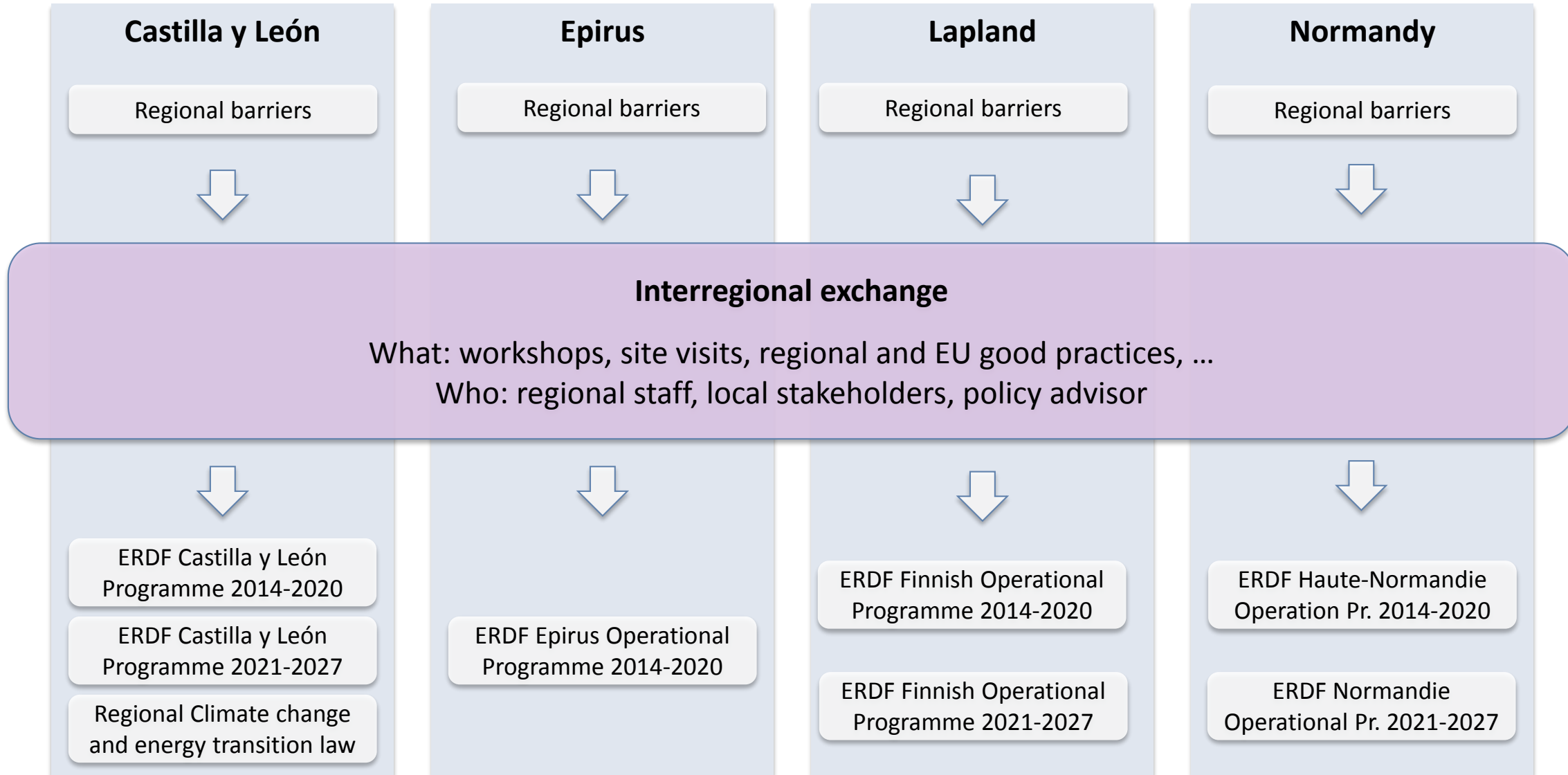
- Implementation of the regional action plans
- Monitoring and assessment

APPROVE is based on a policy learning process through **interregional cooperation**, exchange of experience and involvement of regional stakeholder groups.

Each involved region will develop an **action plan** for the improvement of its EU Structural Funds operational programme (investment priorities related to TO4 “Supporting the shift towards a low-carbon economy in all sectors”) and addressing regional innovation strategies for smart specialisation.



The process



Good practices

- Participatory approaches in planning and permitting procedures
- Financial participation of communities and citizens
- Measures promoting regional co-benefits
- Building of agreements/institutional structures
- Knowledge /Capacity building
- Education
- Expositions / Fairs
- RES implementations as showcases

The screenshot displays the 'Project good practices' section of the APPROVE Interreg Europe website. The page features a navigation bar with 'NEWS', 'EVENTS', 'GOOD PRACTICES', 'CONTACTS', and 'LIBRARY'. A dropdown menu is set to 'Newest first'. The main content area lists several projects with their titles, descriptions, and locations:

- Wind energy service unit and quality label in Thuringia** (15/05/2020): Support actions for citizens, municipalities and dev... Location: Thüringen, Germany (Deutschland). Categories: Energy, Renewables.
- Tax cuts for a wind farm expansion** (15/05/2020): A measure promoting local co-benefits of renewabl... Location: Sardegna, Italy (Italia). Categories: Citizens, Energy, Renewables.
- Multi-criteria decision aiding to improve participation in...** (14/05/2020): A tool to support decision-making in energy infrast... Location: Lombardia, Italy (Italia). Categories: Citizens, Energy, Environment...
- Bioenergy Plant** (26/04/2020): A Bioenergy Plant which will manage the waste of ... Location: Ηπειρος, Greece (Ελλάδα). Categories: Efficiency, Energy, Farming, Good...
- PV plant as an education facility** (26/04/2020): PV plant as a renewable energy education facility f... Location: Ηπειρος, Greece (Ελλάδα). Categories: Education, Efficiency, Energy...
- Bioclimatic Habitations** (26/04/2020): A group of passive houses constructed in order to ... Location: Ηπειρος, Greece (Ελλάδα). Categories: Efficiency, Energy, Environment...

On the right side, there is a 'Sign up for the APPROVE newsletter' button and a 'Tweets by @APPROVEproject' section showing a tweet about the CLEAN project.

www.interregeurope.eu/approve/good-practices/



The action addresses the selection procedure of **biogas** projects to be funded by the Operational Programme Normandie 2021-2027, to improve their environmental quality and to reduce the local opposition

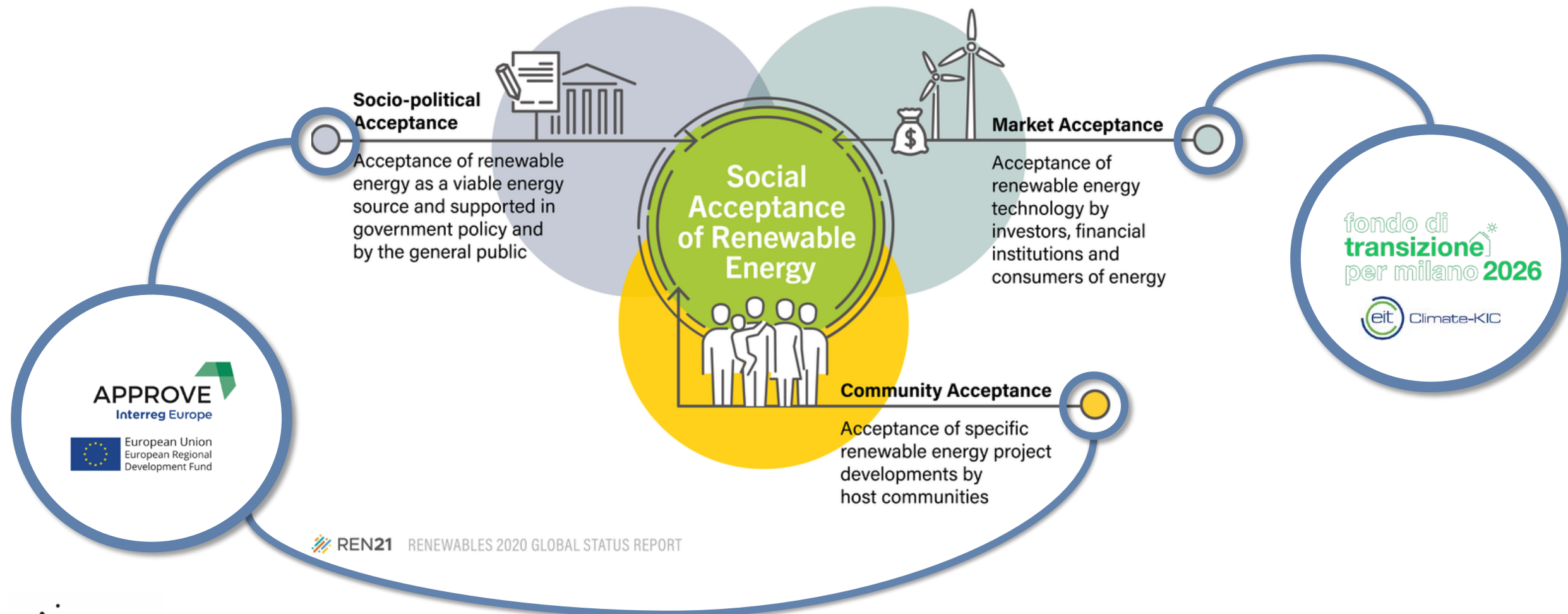
- Set of technical, environmental, social and management criteria (eg. the origin of raw materials, the use of the waste after the production of biogas, the consultation steps and methods used, ...)
- A voluntary protocol (“label”) for biogas project developers

What inspired this action?

- *participation in the Smart Specialization Bioenergy Partnership*
- *good practice “Service unit wind energy & quality label in Thuringia” from the H2020 WinWind project*

Social acceptance of RES: a possible framework

Dimensions of Social Acceptance of Renewable Energy



Wüstenhagen, R., Wolsink, M., & Bürer, M. J. (2007). Social acceptance of renewable energy innovation: An introduction to the concept. *Energy policy*, 35(5), 2683-2691.

https://www.ren21.net/gsr-2020/chapters/chapter_08/chapter_08/

Milan 2026 Transition Fund

Develop an innovative **financing** mechanism to support the spending commitment for the implementation of technical and technological solutions in the **deep renovation of buildings**, aimed at improving the quality of homes and achieving zero-energy consumption.

fondo di
transizione
per milano **2026**



community retrofit of
10,000 households by 2023
scaling to 100,000 households by 2026

www.poliedra.polimi.it/en/project/mtf-2026/



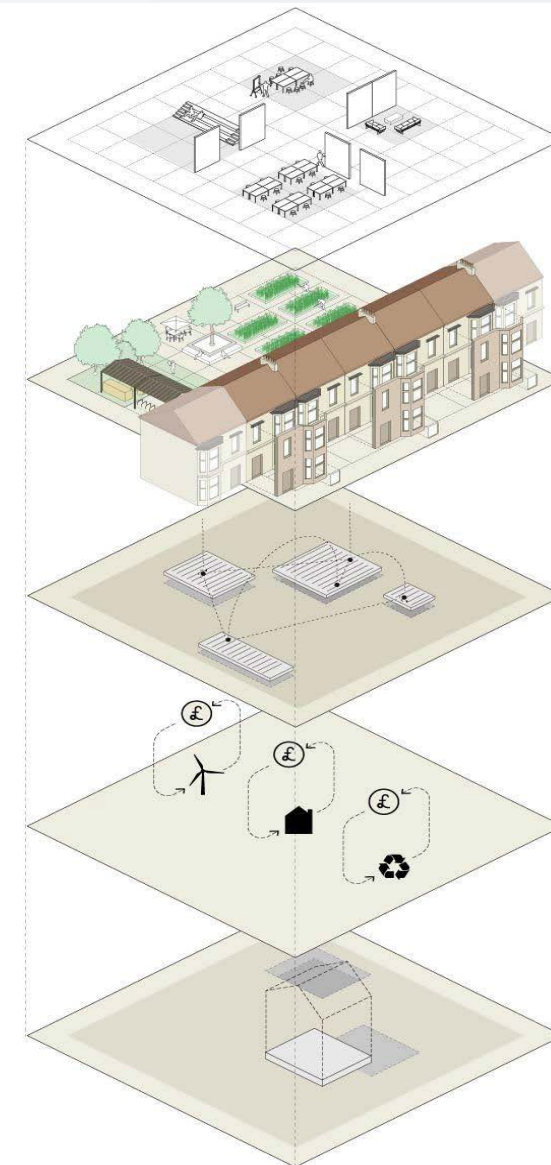
DIPARTIMENTO DI ENERGIA



«Community retrofit»

Broad and profound **energy requalification** program for public and private **buildings** by renewing both the envelopes and the energy systems, combined with the regeneration of the affected **neighbourhoods** through the implementation of green infrastructures and public spaces.

The MTF2026 project will be developed through a broad citizens' involving process in the selected pilot area, useful for aggregating demand and aimed at building a vision for a “**carbon neutral community agenda**”.



Neighbourhood Action & Upskilling

Providing the right **support, services and infrastructure to citizens and community groups** can help to scale up retrofitting across Europe helping to aid a **green recovery post Covid.**

This will need us to design, establish and fund local skills training and coordination of retrofitting work, in order to replicate and scale.



Co-design

Involving inhabitants and building administrators in a “bottom-up” contribution to the definition of the innovative financing scheme within the project.

Co-operative

Establishing a co-operative able to organise the demand and connect it to supply and funding can reduce the hassle on individual residents while enabling economies of scale.

Community Visioning

Through a series of workshops establishing a local vision for the transition, builds local and civic agency as well as a contextually relevant designs.

Social Commitments

Establishing social commitment between residents for long-term care of their environment and associated mechanisms enabling required upskilling.

Lessons learned

Prioritize your effort “where the money goes”

- From pilot/demonstration actions → effective scale-up
- Example: influence Structural funds (€ 40 billion for energy in 2014–2020)

The importance of the regulatory framework

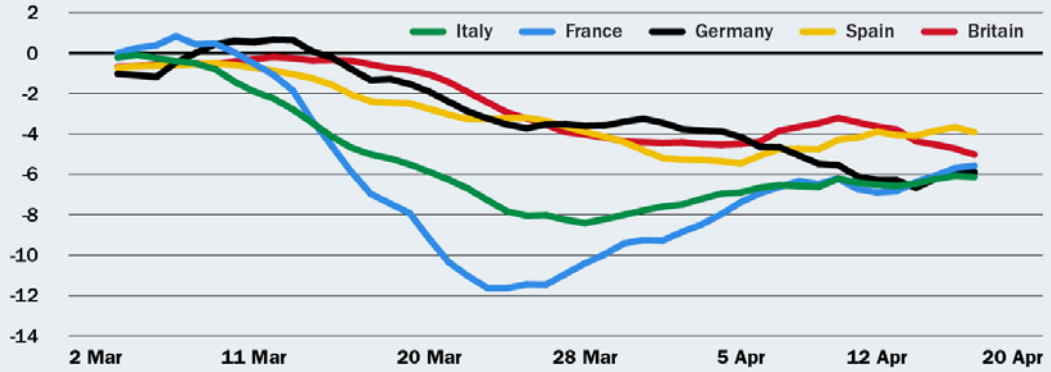
The value of the Interregional Exchange across EU

- Hint and tips from “pairs” (i.e. public servants of other regions)
- The role of the innovation to push

Capacity building

ELECTRICITY DEMAND RALLYING IN MOST COUNTRIES

Demand vs expected (GW)



SOURCE: ICIS

Note: rolling seven-day average

www.icis.com/explore/resources/news/2020/04/22/10498761/european-electricity-demand-rebounding-amid-coronavirus-lockdowns

*we won't return to
normality*

*because normality
was the problem*



<https://www.technologyreview.com/2020/03/17/905264/coronavirus-pandemic-social-distancing-18-months/>

Thank you



Poliedra

POLITECNICO DI MILANO

<http://www.poliedra.polimi.it/>

Follow us!

[linkedin.com/company/consorzio-poliedra](https://www.linkedin.com/company/consorzio-poliedra)

[facebook.com/consorziopoliedra](https://www.facebook.com/consorziopoliedra)

twitter.com/CPoliedra