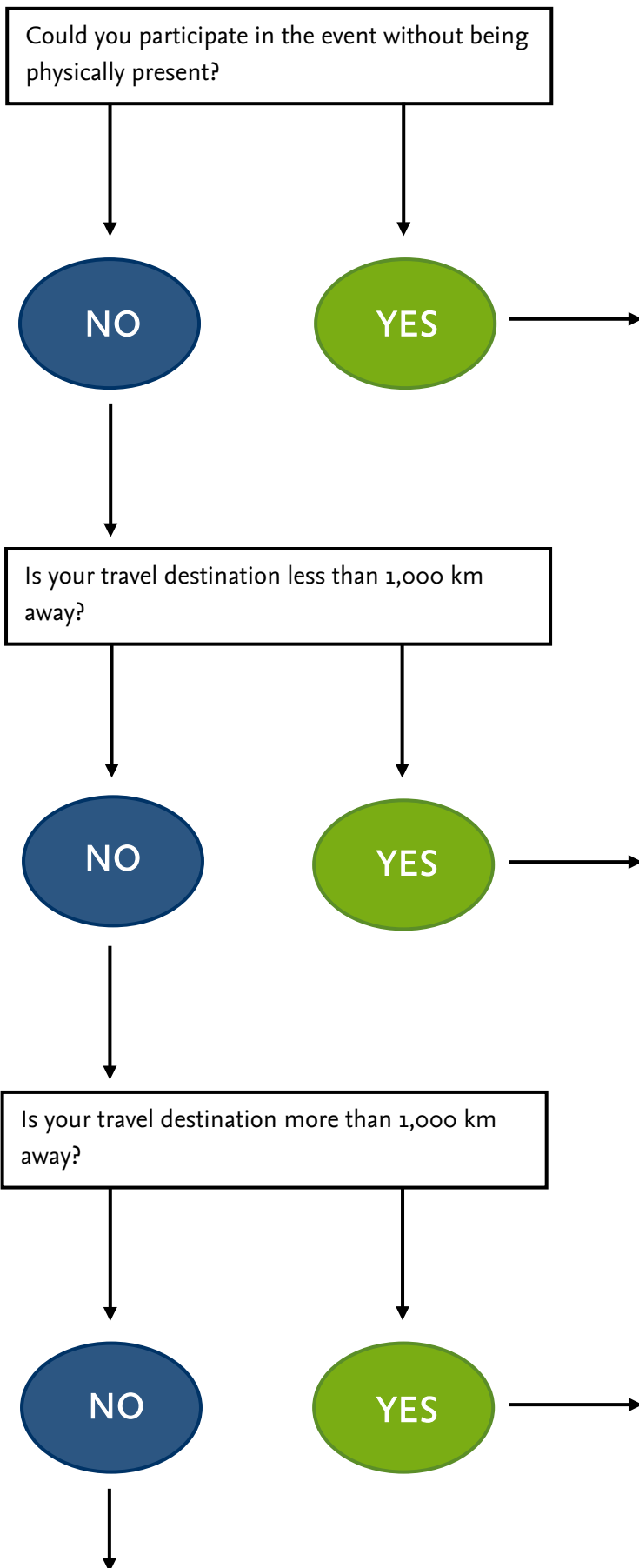


Decision Tree

The decision tree is meant to help you reflect on your travel plans and identify, where possible, low-emission alternatives.



Checklist:

Why are you participating in the event? Are there other ways to exchange information that do not necessitate travel? Could you use one of the [12 video conference rooms at FU Berlin](#) and attend virtually? Could you stream the event? Have you thought about using the FU Box or Researchgate to work online? Do you need help to be able to attend through such a platform? [Contact Zedat Support.](#)

You might be surprised to learn that flying does not save much time and money at all when you consider the journey to the airport and the time spent waiting for your flight. For many destinations (for example in Europe, on the East Coast of the US, or in China), taking the train is a convenient alternative to flying and often actually more comfortable for working. There are online tools designed to help you calculate the duration of your trip by train versus by airplane. [FU Berlin receives a discount from DB for being a major customer.](#)

With increasing distance, flying is often the only feasible option. Could you combine this trip with other work-related activities so as to maximize the benefit of the trip? Decide whether the trip is really worth its impact on the climate and your absence at the office.

Hmm, perhaps you should start again!